



South Side Brushes

# Brushstrokes



Volume 8 Issue 3

www.southsidebrushes.com

July—August 2011

## Inside this issue:

|               |        |
|---------------|--------|
| Paint-In      | 5      |
| Garbage Gerte | 2      |
| Membership    | 2 & 11 |
| Seminars      | 6      |
| Crisis Center | 7 & 12 |

## PRESIDENTS MESSAGE

Hi Everyone,

I hope that all of you are getting a chance to paint now that Summer is here. It is difficult with so many fun things to do, like going to garage sales and flea markets and stopping for ice cream somewhere along the way. What a great opportunity to find that special item that you can paint and make into a Spectacular piece for the Garbage Gertie contest at the Holiday Party in January. I know that it sounds like a long way away but trust me it is only around the corner.



Speaking of just around the corner....we have a nominating committee who consists of Joyce Janulis, Kristy DeCleene and Georgia Wanda. These ladies will be contacting members to see if they would like to seek an office on the board for Southside Brushes for 2012 and 2013. Please remember the fun and good times you have had in the past seven years. In order for our club to go on we need your help. Without board members and committee heads we could not have such a wonderful club. We do need volunteers for the upcoming board. If you are interested please contact one of the nominating committee members or one of the current board members.

At the May meeting we had the Longaberger fundraiser which was elegantly put together by Denise Nugent. It was really wonderful with all the delicious dips that you could purchase and beautiful items that Denise had on display. The fund raiser, with Denise's hard work, made \$625.00. Thank you so much Denise! By the way Denise donated all proceeds from the sale to SSB.

We are looking forward to the September Membership meeting which will take place September 17 at the Worth Park District. We have 4 teachers this year with 4 different projects. The member fee for that day will be \$10.00 and all guests will be free.

In October we will be having Connie Parkinson as our seminar teacher. Be sure and see Sue Taylors article in the newsletter. Since Connie is a Royal Brush Ambassador, Royal Brush and Deco Art pay some of her teaching fees.

Some of the members are getting together under the direction of Georgia Wanda



**President**  
Barbara Urban

barbaracurban@hotmail.com

**1st vice President**  
Denise Nugent

organizedfive@comcast.net

**2nd Vice President**  
Robin Manestar

**Secretary**  
Diane Masloroff

dmasloroff@comcast.net

**Treasurer**  
Beverly Fry

bafry1073@yahoo.com

**Newsletter**

Sandy Glowinke

sglowinke@sbcglobal.net

**Seminar**

Susan Taylor

staylor603@comcast.net

**Hospitality**

Pam Carley

pcarley@sbcglobal.net

**Raffle**

Susan Hanek

qtpies@ameritech.net

**Historian**

Pat Brown

lalobawise@ameritech.net

**Fund Raising**

Judy Stahl

judystahlsjp@aol.com

**Web Master**

Donna Heenan

djheen@att.net

**Sunshine**

Ronni Benedetti

gwen60402@yahoo.com

on June 18 to paint bags for the Crises Center. By the time you receive this newsletter we will have painted the bags and will have had a good time I am sure.

Have a nice summer and paint whenever you get a chance.

Barb

## 2ND VICE PRESIDENT- MEMBERSHIP



Please welcome our newest member:

Jonnie M Simmons-Johnson  
7012 S. Prairie Ave.  
Chicago, IL 60637  
Jsimmons-johnson@comcast.net

This brings our membership up to 64. Remember that you will need to renew your membership in September. The cost is only \$15.00. Also note that SDP member ship has gone up to \$50 instead of \$40.

If you information, has changed, please let me know.

Robin

## GARBAGE GERTIE

Don't forget this summer to look around for a special item to paint for the Garbage Gertie competition at the Winter Elegance Party in January. Any old item found at a flea market, garage sale, in grandma's attic, or Resale shop qualifies. Paint it up and bring it to the Party and you will have a chance to win a seminar ticket. Remember we have some great



**SOUTH SIDE BRUSHES CHAPTER MEETING**

May 21, 2011

**Board Members Present:** Barbara Urban, President; Denise Nugent, 1<sup>st</sup> VP; Robin Manestar, 2<sup>nd</sup> VP; Beverly Fry, Treasurer; Diane Masloroff, Secretary.

The meeting was called to order by Barbara Urban at 10:15 am. A motion was made by Betty Slazyk to accept the minutes as printed in the May/June Newsletter and seconded By Judy Selangowski.

**Treasurer's Report:** **Beverly Fry** Opening balance \$3,631.61; Income \$1,308.00; Expenses \$1,839.35; Closing balance \$3,100.26.

**Paint-Ins:** **Denise Nugent** Today's Paint-In will be taught by our member, Gloria Bogs. Gloria has designed a floral to be painted in water color. There are 12 painters sign-up. September 17<sup>th</sup> will be SSB's Membership Drive meeting. The following members will teach:

Rita Bartak, Reindeer Jingle bell  
Susan Hanek, Snowman Screen  
Robin Mainstar, Puff paint on a check book  
Mary Sterling, Acrylic on Canvas

Sign up for two classes will be \$10.00, guests are free, and lunch is \$7.00.

**Membership:** **Robin Manestar** Presently SSB has 63 members. Member books are still available to be picked up.

**Seminars:** **Sue Taylor** Connie Parkinson will teach the October 15 & 16<sup>th</sup> seminar. The seminar cost \$30 per day and a charge of \$7.00 for lunch. Information for the Seminar is in the newsletter and on SSB website. The seminar will be held at a different Location. The Palos Heights Rec Center, located at 6601 W. 127<sup>th</sup> Street. Harlem to 127<sup>th</sup> Street. Turn East to 6601 about ½ block west of Ridgeland on south side of street.

**Fund Raiser:** **Jud Stahl, absent.** Irene Schranz reported the Longaberger fundraiser, organized and run by Denise Nugent, a Longaberger representative, is today. SSB will receive 40% of all sales.

**Chapter Community Service Project:** **Georgia Wanda** Georgia has organized a Paint-In to paint canvas bags for the Crisis Center. The date is June 18<sup>th</sup> from noon to 4 pm at the Palos Heights Rec Center at 6601 W. 127<sup>th</sup> Street in Palos Heights. The bags and paint will be provided by SSB. Bring you painting supplies.

**Bags for Crisis Center: Painting Classes for the Kids at the Crisis Center:** **Joan Muzzey** The painting class at the Crisis Center was a huge success. Joan and Sue Nemec helped teach ten children and a couple of Mother's how to paint small pots with faces on them and then planted grass seed in the pots. All participants enjoyed the project. Joan has asked for more volunteers. She needs 4 – 6 more SSB painters. Please contact Joan Muzzey if you can help is this worthwhile project. The next class will be in October.

**Newsletter:** **Sandy Glowinke** Articles for the next newsletter are due June 10<sup>th</sup>. If Sandy has not responded to your article, please call her.

**Ways & Means:** **Sandy Dreher, Alberta Overocker, Jerri Colburn absent.** There are brushes still available to order.

**Raffle:** **Susan Hanek** Susan thanked Pam and Cherri for their help with the raffle. Susan also thanked all members that donated to the raffle today. We made approximately \$250 today.

**Historian: Sue Nemec** Sue Nemec and Judy Selanowski will work together to organize the pictures and place them in the Chapter Scrapbooks. Sue has replaced Pat Brown. Nancy Carley had been the Historian for SSB since the beginning of our Chapter. Nancy and her husband have done an outstanding job of recording our history through the camera lens. Nancy worked at keeping the photos Organized in our photo albums and supplied CD's of photos for the Newsletter and website for years. We are all very appreciative for all that Nancy has done to preserve the history of SSB. Thank you Nancy. Sue Nemec will now take over the job of historian for SSB. Please help Sue with you job by giving her any photo's you may have to add to our album.

**Garbage Gertie: Gerri Radon absent.** Please be on the look out this summer for an item or items for the Garbage Gerie competition at the January 2012 party. The projects will be displayed at the annual Holiday Party in January 2012 and the pieces will be voted on that day. The winner will receive a prize of a free seminar of your choosing.

**Website: Donna Heenan, absent.**

**Sunshine: Ronni Benedetti, absent.**

**SDP Liaison: Cherri Putz** Nothing to report.

**Hospitality: Pam Carley** Pam thanked all that brought goodies to the meeting today. Barbara Urban asked people to bring a dessert or breakfast treat to the seminars.

**Vintage Books: Dorothy Mestan, absent.**

**Nominating Committee: Joyce Janulis, Kristy DeCleene** We need one more volunteer for the Nominating Committee. Please contact Barbara Urban or Joyce Janulis if you would like to be on the committee.

**Old Business:** Barbara Urban is continuing a search for information on a projector for SSB. She is hoping to have the projector as soon as November.

**New Business:** Members bringing a painted piece for Show and Tell will be asked to do a minute presentation of their piece. We would like to know who the designer was, if you painted the piece in a class and the material of the surface. Rita Bartak showed a box, designed by Lynn Deptula and painted at her IHDA retreat. Janet Musselman Showed a Maureen McNaughton design painted on black multi-media board.

Janet Anderson suggested making cards for Nursing Homes, soldiers, etc. as a Philanthropic project.

Susan Hanek asked for donations of painted pieces for the Holiday Luncheon Raffle in January, 2012 and also suggested that people donate wood pieces with patterns for the September meeting.

Betty Slazik, IPP Seminar Chairperson announced the October 24 & 25 seminar at IPP.

Georgia Wanda will teach acrylic painted shirts. The class is \$35.00, pattern \$5.00 and a paint palette for \$10.00. The next day Barbara Urban will teach acrylic painting on a Chair. The class is \$35.00 and the pattern is \$5.00. Contact Betty Slazik to sign up for this seminar.

The next Board meeting will be June 7, 2012 at 6:30 pm at the Worth Public Library 6917 West 111<sup>th</sup> Street in Worth.

A motion was made by Denise Nugent to close the meeting at 10:50 am and seconded by Joyce Janulis.

Respectfully submitted, Diane Masloroff, Secretary



# SEPTEMBER PAINT-IN

Our **MAY PAINT-IN**, Gloria Bogs' Floral Design in Watercolors, was a wonderful class, with 13 people staying to paint. Everyone really enjoyed watching her own floral design emerge after sprinkling salt onto her watercolored surface. This was a new and unique technique for most of us. Thanks, Gloria!



Plans are now underway for our **SEPTEMBER MEMBERSHIP DRIVE MEETING**. Please note that this year we are implementing a \$10.00 flat rate Paint-In Fee for the day for each member participating in Paint-In Classes. There will be no Paint-In Fee for any of your Guests, so we encourage you to invite your friends, neighbors and family members to join us, paint with us and share in our love of decorative art. The Hospitality Committee will also offer an optional catered lunch in the amount of \$7.00 for each person attending (Member and Guest).

The Board is happy to announce the following Classes available for the September Membership Drive Meeting:



Susan Hanek will be teaching a Snowman on Screening Material;



Rita Bartak will be teaching a Reindeer on a Jingle Bell;



Robin Manestar will be teaching Puff Paint on a Checkbook Cover;

Mary Sterling will be teaching Potted Bittersweet on Canvas Board.



You and your guests may register for any two of the above four classes offered by phone, e-mail or mailing me the registration form contained within this Newsletter.



Have a Great Summer! God Bless You and Happy Painting!  
Denise

## SEMINAR INFORMATION

October 15 & 16, 2011 – Connie Parkinson

### Seminar Location (Note Location Change for October)

Palos Heights Recreation Center  
6601 W 127<sup>th</sup> Street  
Palos Heights, IL

**Saturday October 15, 2011**

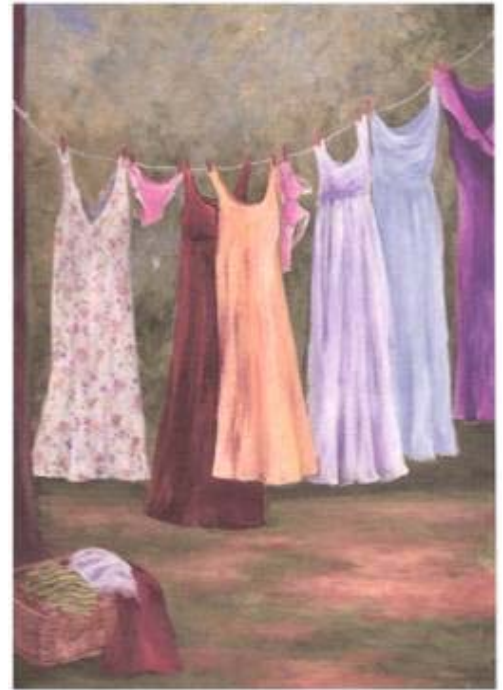
**Acrylics – Party Line**

**9 x 12 stretched canvas or your choice**

Seminar Fee \$30 Members

\$40 Non-Members

Lunch \$7



**Sunday, October 16, 2011**

**Acrylics – Marche aux Fleurs**

**9 x 12 stretched canvas or your choice**

Seminar Fee \$30 Members

\$40 Non-Members

Lunch \$7

Any questions or to sign up contact Sue Taylor  
at: [staylor603@comcast.net](mailto:staylor603@comcast.net)

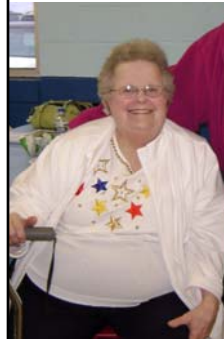


**SOUTH SIDE BRUSHES  
TREASURER'S REPORT  
AS OF JUNE 9, 2011**

|  |                                    |                   |
|--|------------------------------------|-------------------|
| <b>January 1, 2011 Opening Balance</b> |                                    | <b>\$3,660.40</b> |
| <b>Opening Balance</b>                 | <b>\$3,631.61</b>                  |                   |
|  | <b>April 9-June 9 YEAR TO DATE</b> |                   |
| <b>Income</b>                          |                                    |                   |
| Advertising                            |                                    | \$7.50            |
| Annual Fund Raiser                     |                                    | \$0.00            |
| Cookbook                               |                                    | \$0.00            |
| Gift Certificates                      |                                    | \$0.00            |
| Holiday Party                          |                                    | \$1,458.00        |
| Holiday Raffle                         |                                    | \$575.00          |
| Hospitality                            | \$154.00                           | \$390.00          |
| Membership                             | \$15.00                            | \$90.00           |
| Miscellaneous                          |                                    | \$3.52            |
| Paint-In Income                        | \$120.00                           | \$370.00          |
| Raffle                                 | \$285.00                           | \$636.00          |
| Seminar Income                         | \$1,044.59                         | \$1,750.59        |
| Surfaces and Patterns                  | \$261.91                           | \$549.91          |
| Table Fee                              |                                    | \$50.00           |
| Vintage Books                          | \$16.80                            | \$54.85           |
| Ways & Means                           |                                    | \$103.00          |
| <b>Total Income</b>                    | <b>\$1,897.30</b>                  | <b>\$6,038.37</b> |
| <b>Expenses</b>                        |                                    |                   |
| Advertising                            |                                    | \$0.00            |
| Annual Fund Raiser                     |                                    | \$0.00            |
| Board Expenses                         |                                    | \$284.03          |
| Holiday Party                          |                                    | \$1,249.85        |
| Holiday Party Raffle                   |                                    | \$189.21          |
| Hospitality                            | \$326.32                           | \$581.33          |
| Meeting Location                       | \$160.00                           | \$900.00          |
| Membership                             |                                    | \$104.79          |
| Miscellaneous                          |                                    | \$134.12          |
| Newsletter Expense                     |                                    | \$76.54           |
| Paint-In Expense                       |                                    | \$288.00          |
| Postage                                |                                    | \$9.38            |
| Printing                               |                                    | \$0.00            |
| Raffle                                 | \$114.00                           | \$252.34          |
| Seminar Expense                        | \$337.40                           | \$368.90          |
| Seminar Teacher Gifts                  |                                    | \$0.00            |
| Service Projects                       | \$174.16                           | \$223.42          |
| Sunshine                               |                                    | \$25.60           |
| Surfaces and Patterns                  | \$314.00                           | \$417.00          |
| Tax Expenses                           | \$85.00                            | \$85.00           |
| Teacher Fees                           | \$775.00                           | \$1,200.00        |
| Ways & Means                           |                                    | \$36.38           |
| Website                                | \$19.90                            | \$49.75           |
| <b>Total Expenses</b>                  | <b>\$2,305.78</b>                  | <b>\$6,475.64</b> |
| <b>Closing Balance</b>                 | <b>\$3,223.13</b>                  | <b>\$3,223.13</b> |

**CRISIS CENTER TOTE  
BAGS AND  
DONATED ITEMS**

As usual SOUTH SIDE BRUSHES came to the rescue for the Crisis Center once again. The donations that were brought to our last meeting are so greatly appreciated. Our group is among the most giving ladies I have ever encountered. I luv working with all of you.



I know the Tote Paint-In Class scheduled for this Saturday will be a HUGE success. Details will be given in the next newsletter.

Thanks again ... Georgia



**Southside Brushes Seminars**

**2011**

October 15 & 16, 2011 Connie Parkinson

**2012**

February 18 & 19, 2012 TBD

April 21 & 22, 2012

Prudy Vannier

August 25 & 26, 2012

Shara Reiner

October 20 & 21, 2012

Bob Pennycook

**2013**

February 16 & 17, 2013

TBD

April 20 & 21, 2013

TBD

October 19 & 20, 2013

Janelle Johnson

## RAFFLE

Here is a long list of Thank you's to all the ladies who donated such beautiful raffle prizes for the May mtg. For the fresh flowers donated by Beverly,,SSB,,& a secret garden angel..For the handpainted items donated By Joyce,,Cheri,,Pam..for the handmade gift boxes donated by Jan..The herb planters donated by Dorothy. The Daffodil basket & teddy bear plaque donated by Denise..The garden fountain & garden angel donated by Beverly..The handmade bracelet donated by Cheri..All of these beautiful items brought in \$285 for the raffle.

Thank you all so very much for making our raffle such a wonderful success..

For the September raffle I'm looking for some surfaces w/patterns to go on them..I'm @ 10 & am looking For some more and also some handpainted items in a fall/autumn theme..Gracias,,SusanJ



## WAYS & MEANS

Life works out weird sometimes. I am still in shock that not one of the three of us could make the May meeting. Oh well, as the song says, "That's Life".



Since no one ordered any brushes from Scharff, we are suspending that promotion.

In Sept. we will have more Vellum paper for your patterns. If you haven't tried this great product, this paper goes through most printers, making your tracings nice and crisp. It is a little heavier than regular tracing paper, but you can see what you are tracing through it. It's a personal favorite of ours. As always, if you come across any good ideas for products we can use on the

Ways & Means table, pass them along to any one of us, so we can acquire those things for you.

Have a Great Summer,  
Sandy Dreher, Alberta Overocker, Jerri Colburn

**Deadline for the next newsletter is August 8th.**



Please email all articles to: [ssbnewsletter@yahoo.com](mailto:ssbnewsletter@yahoo.com) This email address is not always monitored, so feel free to send things to my regular email address:  
[sglowinke@sbcglobal.net](mailto:sglowinke@sbcglobal.net) please put SSB in the subject line

Thank you  
Sandy Glowinke.

Next board meeting will be August 2nd at the Worth Public Library

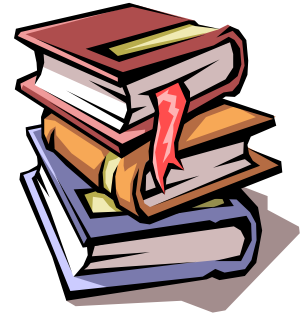


## VINTAGE BOOKS

The summer months are a good time to go through and get rid of unwanted patterns, pattern books and painting magazines. Bring them to the September meeting and donate to vintage books.

\$16.80 was collected at the May meeting. Thanks to everyone

Pattern packets-----10 cents each  
 Pattern books-----25 cents each or 5 for \$1.00  
 Hard cover books-----\$1.00 each  
 Videos-----\$1.00 each  
 Magazines-----25 cents each



Have a safe and happy summer,  
 Dorothy

## HOSPITALITY



I like to give a big thank you to all the members who donated coffee cake, fruit and dessert to May meeting. They are Joyce Janulis, Jean Osborne, Clare Horneij, Janice Anderson, Barbara Halm and Jamie Johnson.

Just a reminder South Side Brushes will not be providing the beverage at lunch. We will still have coffee and hot tea throughout the day.

For the September meeting we are having Sandwiches and chips for a cost of \$7.00 per person. Please make the check payable to South Side Brushes and mail to Denise Nugent her address is in the membership booklet and as always, dessert and snacks are welcome.

I am looking for volunteers to help with setup and clean up. Please contact me by phone or email.



Pam Carley 815-741-1993 email pcarley@sbcglobal.net

## IPP SEMINAR SCHEDULE

**ALL PAINTERS** are invited to attend IPP'S seminars (sister chapters & non- members) Projects are on our website:  
[www.Illinoisprairiepainters.org](http://www.Illinoisprairiepainters.org)

### 2011

September 24 SATURDAY - Georgia Wanda – fabric paint

September 25 – SUNDAY - Barbara Urban – acrylics

### 2012

June 22-24 Cheri Rol – Oils

September 28-30 Kathy George – watercolors

### 2013

March 22-24 Maureen McNaughton – acrylics

### Contact persons:

Seminar Chair Bettie Slazyk – [eslazyk@cs.com](mailto:eslazyk@cs.com) 219-972-9439

Co-Chair Barbara Loehman – [loehmanb@att.net](mailto:loehmanb@att.net) 630-969-7131

### South Side Brushes Membership Application Form 2011

Send \$15.00 for an individual membership payable to: South Side Brushes and mail to SSB c/o Robin Manestar, 11705 S. Magoun Dr., St. John, IN 46373. If you have questions, please contact: Robin Manestar at [robin.manestar@zurichna.com](mailto:robin.manestar@zurichna.com).

Last Name \_\_\_\_\_ First Name \_\_\_\_\_

Birthday (Day, Month) \_\_\_\_\_ Spouse's Name \_\_\_\_\_

Address \_\_\_\_\_

City \_\_\_\_\_ State \_\_\_\_\_ Zip Code \_\_\_\_\_

Phone \_\_\_\_\_ Cell \_\_\_\_\_

E-Mail Address \_\_\_\_\_

New Member?  Yes  No Sponsor's Name (if any) \_\_\_\_\_

Renewal Membership?  Yes  No SDP Membership # \_\_\_\_\_

**REQUIRED**

Category:  Student  Teacher  Independent  Shop Owner

Newsletter will be e-mailed unless you check here for regular mail

#### For SSB Membership Use Only

Paid by:  Check # \_\_\_\_\_  Cash SDP Membership verified  Date: \_\_\_\_\_

Date to Treasurer: \_\_\_\_\_

#### SDP Membership Application Form 2011

Make out separate check to SDP and mail directly to SDP

Name \_\_\_\_\_ Membership # (If Renewal) \_\_\_\_\_

Business Name (If Joining As a Business Member) \_\_\_\_\_

Address \_\_\_\_\_

City \_\_\_\_\_ State \_\_\_\_\_ Zip Code \_\_\_\_\_

Phone \_\_\_\_\_ Fax \_\_\_\_\_

E-mail \_\_\_\_\_ Website \_\_\_\_\_

Individual Membership \$40 (\$45 after 12/1/09)

Business Membership \$70 (\$75 after 12/1/09)

#### Business and Teacher Directory Resource Categories

Business Members Only – Check all that apply for the Business & Teacher online Resource. Listings are free with Business membership.

Manufacturer/Importer  Publisher  Home Studio  Author  Travel Teacher  
 Distributor/Wholesaler  Retailer  Teacher  Other

#### Individual Members Only

Check all that apply (Listings are \$10 each)

My Design/Painting Skills are for hire  Teacher  Travel Teacher  Author

Check if you are requesting a paper copy of business and teacher online Resource. To be included in the paper copy version (Based on the Categories you checked above), you must renew by Dec 1. Copies will be mailed in spring 2010.

#### Business and Teacher Directory Preorder (optional)

Free for Business Member  \$12 for U.S. Members

Make Checks Payable To: SDP, 393 N. McLean Blvd., Wichita, KS 67203-5968. For Faster Service Use Master Card or VISA and call (316) 269-9300 Ext 105 or Fax to (316) 269-9191. Join Online at [www.decorativepainters.org](http://www.decorativepainters.org)

Visa  Master Card Exp Date \_\_\_\_\_ Phone \_\_\_\_\_

Card Number \_\_\_\_\_ Signature \_\_\_\_\_

## SERVICE PROJECT – WOMEN’S CRISIS CENTER

Don't forget to finish painting your bags for the service project. If you need more bags to paint, please see Pat Brown or Georgia Wanda. Can't paint a bag.... Here are some things you can donate.

### Personal/Household Items

Twin Blankets  
Pillows (New/Standard)  
Baby Teethers and Bibs  
Baby Bottles & Brushes  
Baby Powder, Shampoo, Oil, Lotion  
Diaper Rash Ointment  
Vaseline  
Noxzema Body Wash/Body Spray  
African American Hair Care Products

### For Women and Children

New socks and underwear (women and children)  
Towels and washcloths  
Paper Napkins and Paper Towels  
Powdered Laundry Soap  
Fabric Softener Sheets  
House Slippers  
Computer Software

### Snacks/Food Items

Juice Boxes  
Cookies/Snacks  
Fruit Snacks  
Baby Food – All Stages  
Baby Cereal & Juices  
Assorted Bottled Juices  
Miracle Whip/Mayonnaise  
Coffee & Hot Chocolate  
Canned Soda Pop  
Spaghetti Sauce (Ragu)



### Craft Items

Tempra or Water Color Paints  
Colored Pencils/Washable Markers  
Art Kits  
Felt  
Scissors  
Craft Glue  
Popsicle Sticks  
Blackboard Erasers  
Stickers  
Construction Paper  
Coloring Books



### School Supplies/Educational

Lunch Boxes  
School Back Packs  
3-pronged Standard Folders

### Gift Certificates

Jewel  
Wal-Mart  
Target  
Menard's  
Home Depot  
Department Clothing Stores  
Dominick's

Please bring your donations to the Next Meeting. It would be great to have a large donation to bring to the center!



### *Windy Brushes Seminars*

2011

Oct. 7-9

Lynn Deptula - acrylic